

Pupils are engaged and interested in what they are being taught, and are eager to answer questions and think about the questions posed.

(OFSTED, 2019)

Cranborne Middle School Prospectus



On the pages that follow, we have detailed just some of the key things that we think make Cranborne an excellent middle school environment for our pupils. Underpinning these, are three extremely important aims:

1) Together we aspire to unlock the full potential of each child as a member of the Cranborne Middle School community.

2) Our unique blend of traditional values and creativity provides a stimulating environment, which challenges and supports every child.

3) Positive relationships encourage personal and academic growth, enabling our children to develop into responsible and successful young people.

Cranborne Middle School is a very special place and it's our privilege to welcome you and guide you through our prospectus. Nestling in the idyllic setting of Cranborne Chase, we provide and enjoy a friendly, happy and academically purposeful atmosphere. Our reputation in the local and educational communities is outstanding and collectively, with all of our partners, our mission is to continue to build on this with enthusiasm and determination.



- We believe in a broad and balanced curriculum that is supplemented with educational and social opportunities which occur both outside and inside the classroom. Each child is provided with a broad spectrum of activities to develop their skills, intellect and character through challenging extra-curricular clubs, day and residential visits as well as special focus days during the school year.



- You can learn much more about our school by visiting our website...
www.cranbornemid.dorset.sch.uk
This prospectus is not a substitute for visiting the school and getting a first hand feel for what we are all about. We are confident that whatever your child's needs, Cranborne has the answer and we look forward to meeting you anytime you wish to visit the school.

Cranborne Middle School
Damerham Road
Cranborne
Wimborne
Dorset
BH21 5RP

01725 517348
www.cranbornemid.dorset.sc



ENJOYING AND ACHIEVING

On these pages we have detailed just some of the key things that we think make Cranborne an excellent middle school environment for our pupils.

Underpinning these, are three extremely important aims:

1) Together we aspire to unlock the full potential of each child as a member of the Cranborne Middle School community.

2) Our unique blend of traditional values and creativity provides a stimulating environment, which challenges and supports every child.

3) Positive relationships encourage personal and academic growth, enabling our children to develop into responsible and successful young people.



- We set challenging but achievable targets and monitor pupils' progress to ensure that their academic goals are achieved. We support and extend our pupils' passion for learning, fostered by our staff's passion for teaching. With our outstanding facilities and specialist teachers, we are able to make the most of each learning opportunity.
- Parental involvement is vital. Your role in the education of your child is essential, and we keep you informed through regular reports and opportunities to chat face to face about your child's progress. Working together, we can develop resourceful, resilient and successful individuals who are guided



- The excitement and curiosity about learning goes hand in hand with each pupil achieving the highest academic success of which they are capable. Our enthusiastic and dedicated teachers work hard to provide inspiring lessons that both engage and challenge our pupils.
- We have a balanced and varied curriculum that aims to prepare our pupils for a constantly evolving world. Through a combination of supportive teaching and independent learning, pupils are given the opportunity to develop the skills for lifelong learning: self-motivation, creativity and the ability to work as part of a team.



On these pages we have detailed just some of the key things that we think make Cranborne an excellent middle school environment for our pupils.

Underpinning these, are three extremely important aims:

1) Together we aspire to unlock the full potential of each child as a member of the Cranborne Middle School community.

2) Our unique blend of traditional values and creativity provides a stimulating environment, which challenges and supports every child.

3) Positive relationships encourage personal and academic growth, enabling our children to develop into responsible and successful young people.

ENRICHING

We believe in a broad and balanced curriculum that is supplemented with educational and social opportunities which occur both outside and inside the classroom. Each child is provided with a broad spectrum of activities to develop their skills, intellect and character through challenging extra-curricular clubs, day and residential visits as well as special focus days during the school year.

- The curriculum is enriched through specialist input from visiting professionals such as sports coaches, members of local business and industry and highly qualified musicians. We are proud of our links with our partner school via a French exchange and a popular video-conferencing club that communicates live every week. We also have a careers programme, starting in Year 7, to begin preparing
- We provide challenging and engaging residential visits in each year. These currently include trips to London, Marwell Outdoor Activity Centre and France. For those pupils who do not go on the residential visits, we also run a school based activity week. During this week, pupils can take part in activities from archery to theatre skills, photography to numerous sporting opportunities.
- A vibrant and successful school council represents the student body and is instrumental in influencing the school as well as learning opportunities, social times and the school environment.



- Students at Cranborne Middle School are given every opportunity to explore, question and discover as much about the world as possible. We believe that the results speak for themselves in the enquiring, engaging and dedicated young adults we see moving on at the end of Year 8.

SUPPORTING

Children's wellbeing is at the heart of all we do at Cranborne as we strive to support them academically, socially and emotionally. Using a range of personalised strategies, we can ensure all of our pupils grow into confident and independent young people, preparing them to become lifelong learners.

On these pages we have detailed just some of the key things that we think make Cranborne an excellent middle school environment for our pupils.

Underpinning these, are three extremely important aims:

1) Together we aspire to unlock the full potential of each child as a member of the Cranborne Middle School community.

2) Our unique blend of traditional values and creativity provides a stimulating environment, which challenges and supports every child.

3) Positive relationships encourage personal and academic growth, enabling our children to develop into responsible and successful young people.

- A warm and positive atmosphere is apparent throughout the school, which is just the right size for the pupils to feel they are well cared for as well as having enough facilities, choice and freedom to allow each individual to develop their full potential. We pride ourselves on being a community that appreciates and trusts everyone.
- A needs led support system exists for all pupils. Relationships between teachers, support staff and pupils are positive and strong, built on a foundation of openness, honesty and respect. Close knit teams of tutors and year leaders work closely with the senior leadership team to ensure that the academic and social progress of the pupils is always paramount.



- From time to time, some pupils may require additional support to reinforce or extend learning. This can be in the form of quality, targeted teaching in the classroom, small group activities or one-to-one focused tasks.
- We welcome the support of parents and carers. We respond quickly to issues that may arise, pastorally or academically, using an approach that truly fits your child at that time in their school life.

COMPETING

On these pages we have detailed just some of the key things that we think make Cranborne an excellent middle school environment for our pupils.

Underpinning these, are three extremely important aims:

1) Together we aspire to unlock the full potential of each child as a member of the Cranborne Middle School community.

2) Our unique blend of traditional values and creativity provides a stimulating environment, which challenges and supports every child.

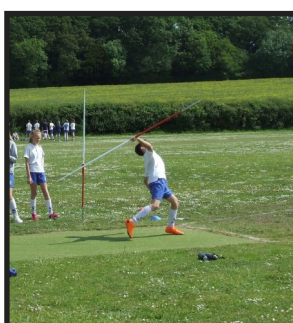
3) Positive relationships encourage personal and academic growth, enabling our children to develop into responsible and successful young people.

Participation in sport is essential to our pupils' health, fitness and enjoyment of school and life. Alongside our varied curriculum, extra-curricular opportunities offer pupils the chance to improve their skills and join in with recreational and competitive sport where taking part is pleasurable and winning desirable.

- We value the importance of sport in our pupils' lives. As well as gaining an understanding of the importance of leading a healthy lifestyle, pupils develop determination, motivation, and team spirit. These attributes help to maximise success throughout the rest of the curriculum
- Given the fantastic facilities, we can offer a wide variety of sports. While retaining the traditional team sports such as football, rugby, cricket, netball and rounders, we also include trampolining, indoor rowing, table tennis and many more. With participation and inclusion at the core of what we do, we offer sports that appeal and engage all of our pupils regardless of their ability or interests.



Children are encouraged to take part in a range of sporting events throughout the year. Sports day, cross country and house matches develop healthy competition and help foster a whole school spirit. Pupils choose from an array of clubs where they can further develop skills learned during lesson time or take on new sports including Tae-Kwon-Do, archery or gymnastics. For those with a real talent or passion for a particular sport and a competitive urge, we arrange opportunities for competing against other schools - friendly fixtures, league matches and national sporting competitions. Many pupils pursue their sporting interests outside of school, going on to play for local teams, and some year 8 pupils develop their coaching skills by becoming sports leaders.



CELEBRATING

On these pages we have detailed just some of the key things that we think make Cranborne an excellent middle school environment for our pupils.

Underpinning these, are three extremely important aims:

1) Together we aspire to unlock the full potential of each child as a member of the Cranborne Middle School community.

2) Our unique blend of traditional values and creativity provides a stimulating environment, which challenges and supports every child.

3) Positive relationships encourage personal and academic growth, enabling our children to develop into responsible and successful young people.

‘Cranborne Means Success’ was chosen by our children as their mission statement as it concisely expresses our drive to succeed. This determination, coupled with hard work and support, ensures that all of our children are able to celebrate their academic and personal achievements during their time with us.

- Children deserve recognition for their achievements both in and outside the classroom in order to develop their self-esteem and confidence. Our reward systems promote and support effort and academic achievement, and children are motivated to collect Epraise points which enables them to enter prize draws and the ultimate recogni-



We are a successful school with plenty to celebrate and it is important to us that the children feel a valued part of this.

- It's not just academic achievement which is valued at Cranborne Middle School. Children here are encouraged to grow into well-rounded citizens and in Year Assemblies each week we celebrate their interests and achievements outside of the classroom. Each year group works closely together to support one another and children are helped to grow into caring and polite individuals with a strong sense of community. We also encourage pupils to set their own goals and recognise their achievements in order to develop a sense of pride.



On these pages we have detailed just some of the key things that we think make Cranborne an excellent middle school environment for our pupils.

Underpinning these, are three extremely important aims:

1) Together we aspire to unlock the full potential of each child as a member of the Cranborne Middle School community.

2) Our unique blend of traditional values and creativity provides a stimulating environment, which challenges and supports every child.

3) Positive relationships encourage personal and academic growth, enabling our children to develop into responsible and successful young people.

PROGRESSING

Ensuring a smooth transition through the academic years is essential to the emotional, social and academic development of our pupils. We see the time spent at Cranborne during a child's formative years as an important stage in their education and we want to help them settle in as quickly as possible.

- Close links with our first schools enable us to ensure a smooth transition for all children from first school to middle school. Ongoing liaison between headteachers as well as the year 5 leader and year 4 teachers underpins the transfer. Each year 4 child is given opportunities to visit the school to see it at work and to meet their year 5 tutor. Careful planning incorporates a range of familiarisation activities with year 8 buddies.
- In order to help our new pupils feel safe and secure, while also developing a growing sense of independence, we have created a timetable where pupils have core subjects with their primary tutor and then receive specialist teaching for subjects such as PE, technology and music.
- The transition to secondary is also important to us. Close liaison with QE takes the form of visits from the Headteacher, year 9 teachers, year 8 pupil visits to the upper school and transfer of academic and pastoral information to ensure their new teachers have a good understanding of each child and their personal and academic needs.



**Queen Elizabeth's Upper School,
Wimborne**

